

Altium Material Library



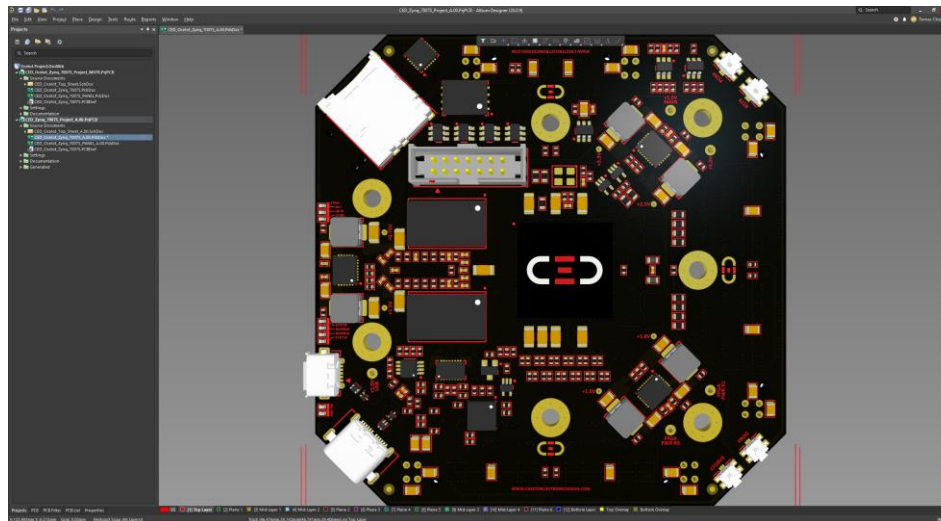
Introduction

The Chester Electronic Design Materials Library allows for proper PCB Layer construction within Altium Designer. With an extensive list of materials to utilize, the following are instructions on how to install the Material Library into Altium Designer 20.

Installation Instructions

Start Altium Designer 20 and Open or Create a PCB.

This will place you into the PCB Editor as shown below.



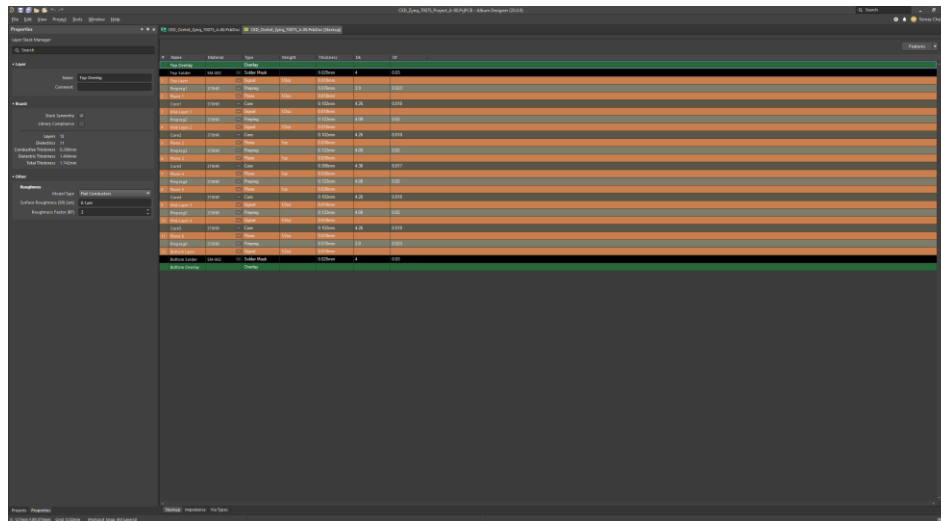
Once you have the PCB View open, access the PCB Layer Stack Manager. This can be done either by menu navigating:

Design >> Layer Stack Manager...

Or by using the keyboard shortcuts in the PCB Editors:

D >> K

This will place you into the PCB Layer Stack Manager as shown.

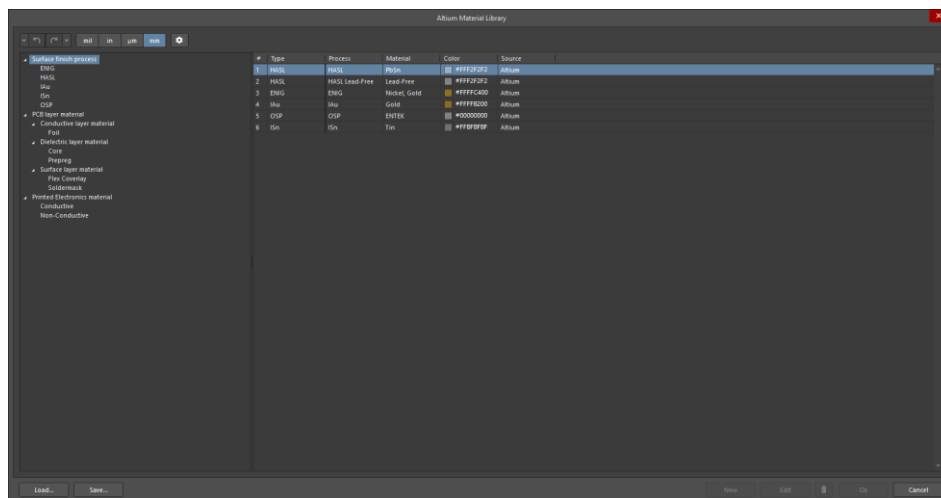


The PCB Layer Stack Manager allows you to add in additional Signal or Plane layers into your PCB Design. This is also where you will build your PCB Stackup with the Core and Prepreg Materials from the CED Materials Library.

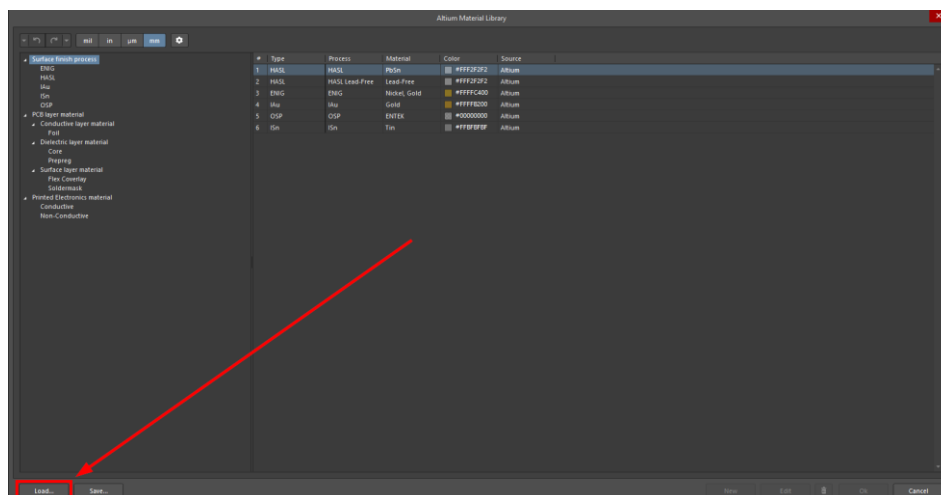
To install the Materials Library, you will need to open the Material Library. This needs to be done by menu navigating:

Tools >> Material Library

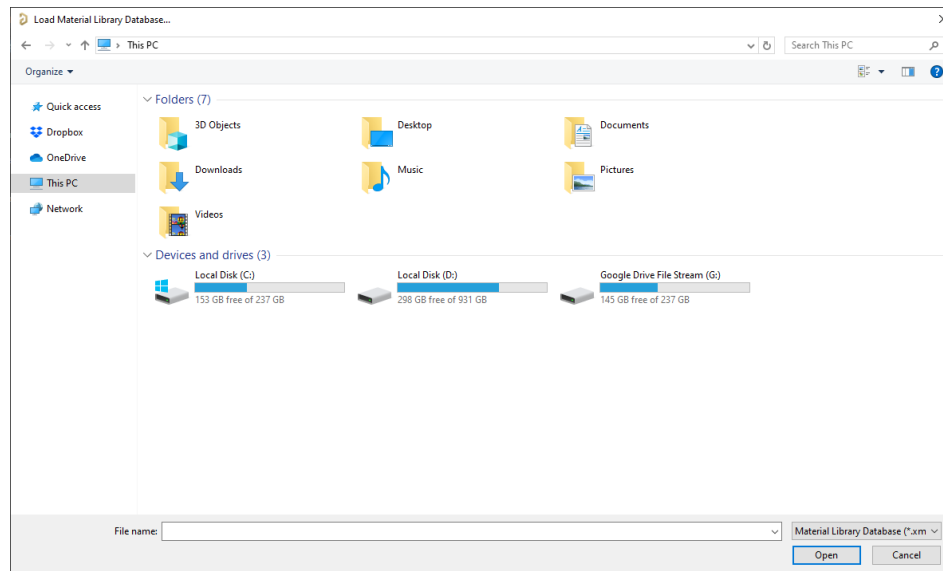
This will open the Altium Material Library window. By default, the view should be on the Surface Finish Process, as shown below.



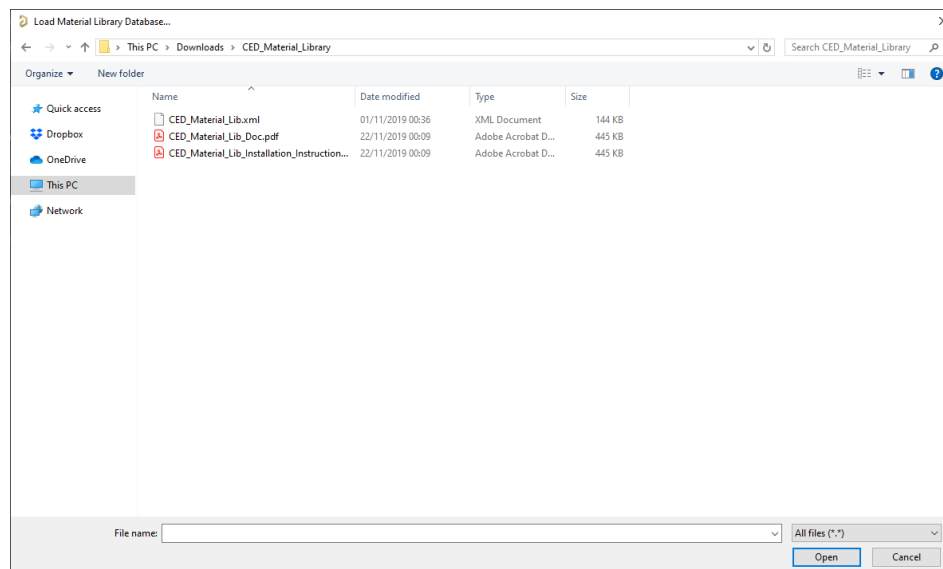
To Install the CED Material Library, simply click on the **Load** Button in the bottom left corner of the Altium Material Library window.



This will open a Load Material Library Database... window, similar to a Windows Navigator window.

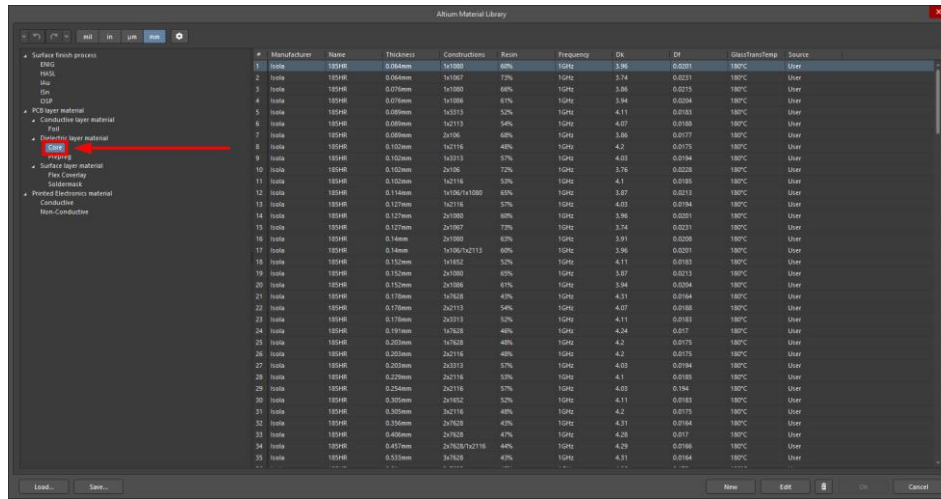


Navigate to the location of the downloaded and uncompressed CED Material Library file (.xml) and select it.

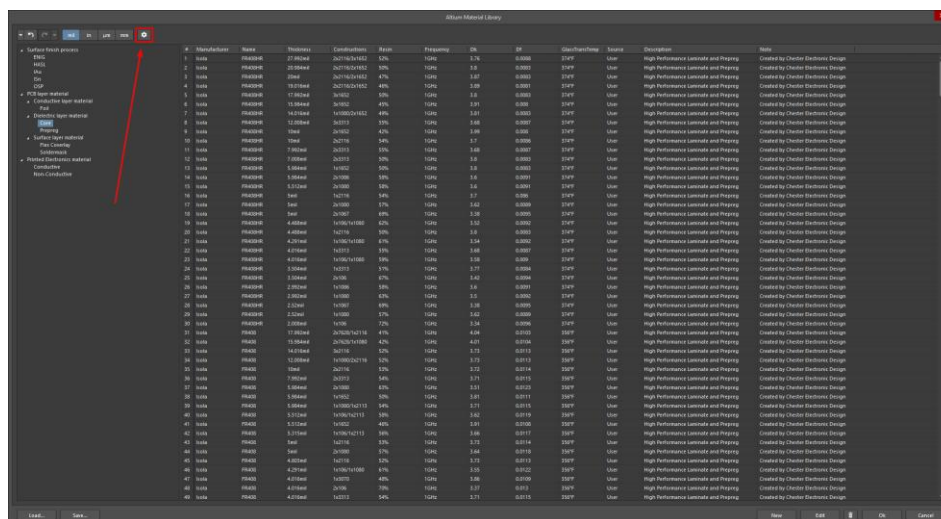


This will Load the CED Material Library into your Altium Designer 20.

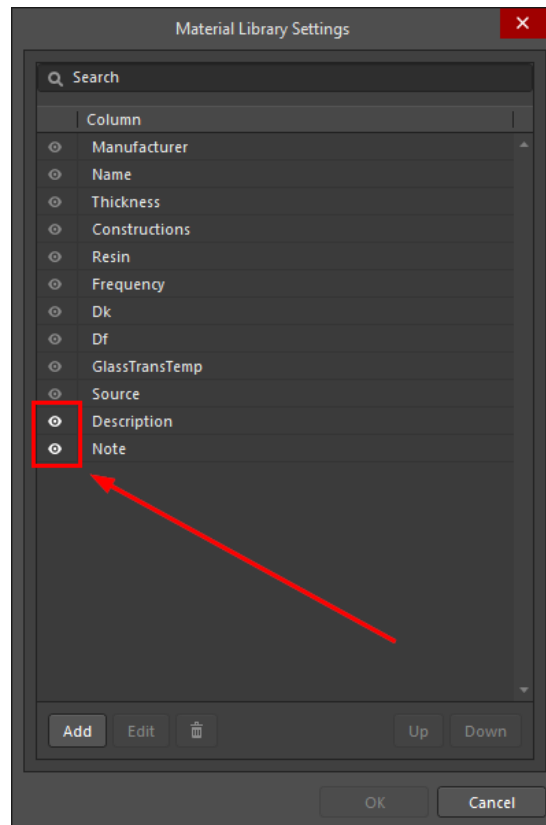
To confirm that it has been properly loaded, navigate within the Altium Material Library window to the Core or Prepreg section in the PCB Layer Material, under the Dielectric Layer Material section.



It is important to note that the Description Column and Note Column are hidden by default. The Description can be useful in understanding the selected material and should be enabled. This can be done in the Setting Menu.



Once in the Settings Menu, simple select the Description 'eye' so it becomes White instead of Grey with a cross line. Then Select OK to close the Setting Menu.



At this point, it can be verified that the Material Library has been correctly installed and can be used.